



# Lancaster University Leipzig

Study for a degree in Germany

# Become part of Lancaster University's global community of learners

---

As a top ten university, we set high standards, but we open our doors to all – it's your capacity to learn about the world that matters. We challenge, pushing our students to new heights. However, we also support – guiding people throughout their studies, research and careers. By choosing to study at Lancaster University Leipzig, you will be joining a global community that seeks to make a global impact to improve lives and communities.

Lancaster University has been named International University of the Year by The Times and Sunday Times Good University Guide 2020. This underlines our record for exporting British higher education to the world and our passion for providing a global learning experience.

Lancaster has partnerships across the world to ensure we deliver teaching that takes students to the frontiers of knowledge and produces graduates who can compete in a global job market.

Lancaster has four partnerships that teach validated Lancaster degrees in Ghana, Malaysia and, most recently, Lancaster University Leipzig.

Lancaster University Leipzig is a thriving, opportunity-led space for students. Our degrees are open to German, EU and international applicants, creating a truly global environment within a welcoming and economically flourishing Germany city.

**Why not join us to be part of our exciting international community?**







# The University



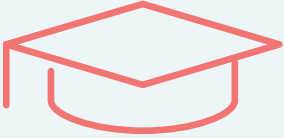
\*The Times, The Guardian and The Complete University Guide 2020

\*\*QS World University Rankings, 2020

†The Times and Sunday Times Good University Guide 2020

††Times Higher Education (THE) European Teaching Rankings 2019





**37,000**  
students in the city

**120**  
hectares of woodland  
and parks, golf courses,  
rivers and canals

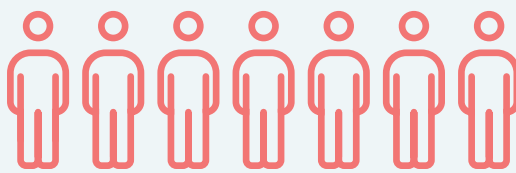


**4**  
airports within  
a 2 hour radius

# The City

**50**  
museums and  
galleries

Population of



**600,000**



**1**  
Bundesliga  
football team



**70**  
minutes to  
Berlin by train



**1,200+**  
restaurants and cafés



# A UK degree with a *difference*

This exciting new campus is an opportunity for you to be part of something unique – a top ranked UK university, based within the welcoming, vibrant and diverse city of Leipzig, Germany.

Studying in Germany provides you with many opportunities, including the chance to stay for 18 months upon graduation. You can use this time to look for permanent employment in the country. It's also the perfect place to base yourself to explore the rest of Europe – with a fantastic rail network and four airports within easy reach.

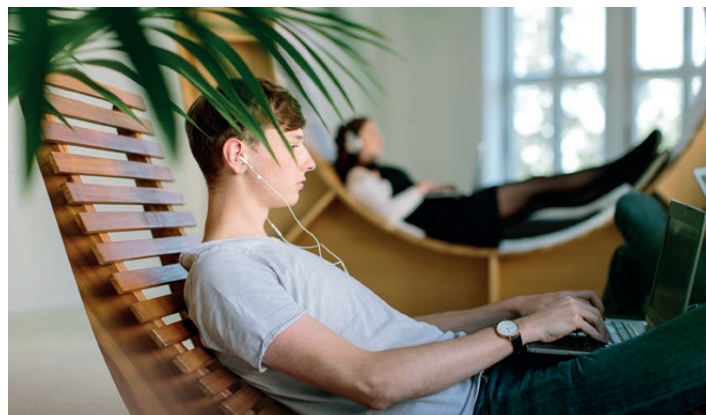
Lancaster University is among the best in the UK. Top 10 in all three major national league tables, as well as ranking 128th in the QS World University Rankings 2020. However, it is more than just rankings - the support and experience you gain whilst studying is of equal importance.

With a campus in the UK, Ghana and Germany, as well as degree awarding partnerships in Malaysia and China, Lancaster University is a truly international University.

Upon successful graduation, you will be awarded a Lancaster University degree certificate and forever be part of the Lancaster University global community.

## Why Lancaster University Leipzig?

1. A top ranked UK University in mainland Europe.
2. A thriving German economy providing post study opportunities.
3. Affordable living costs in an exciting and student friendly city.
4. Learn in English whilst receiving German language support.
5. Travel Europe at the weekend via road, rail or air.





# Study in the 'mini-Berlin'

**Leipzig is often described as a smaller version of the German capital, due to the arts, culture, creativity and diversity of the population.**

The size of Leipzig ensures that students can easily walk or cycle around the city, or jump on one of the main trams that wind around every few minutes.

The Leipzig Auenwalk, a huge area of parkland, stretches across the city from north to south and offers a great place to relax. A network of waterways weave through Leipzig and lead to manmade lakes situated to the south of the city. Cospudener Lake is one of Leipzig's most popular swimming spots.

For those that love shopping, there is a large pedestrian zone with an extensive selection of shops and stores. Restaurants spill out into outdoor eating spaces and create a perfect social space to relax with friends. Cuisine is varied, with something for everyone.

Leipzig is especially well suited to young people. Those who relocate find it a captivating city in which to live, work and study. Lancaster University Leipzig gives students the opportunity to make this city their new home.



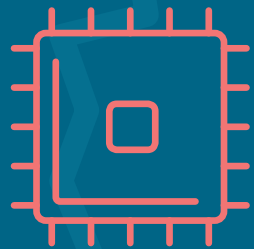


# Germany – a hub for industry

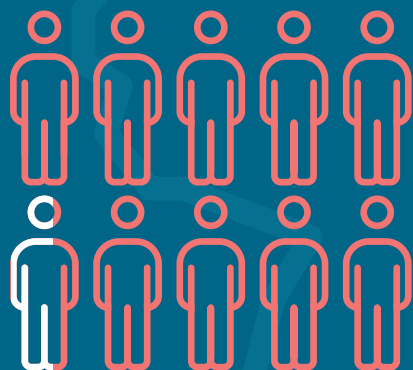
Fourth-largest economy in the world, following the United States, China, and Japan.



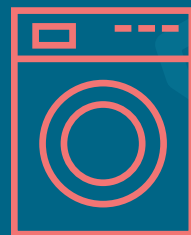
Leading exporter of machinery, vehicles and household equipment.



'Silicon Saxony' is Europe's largest microelectronics cluster and the fifth largest globally – Leipzig is located within Saxony.



Unemployment rate of only 5.7%



Volkswagen, Allianz, Siemens, BMW and E.ON are all German brands, employing hundreds of thousands of people.

# Post-study work opportunities

**As a student studying in Germany, you can apply for an 18-month post-study residence permit upon graduation.**

You can apply for the residence permit and take the time to look for a job that relates to your degree qualification. You can apply for this 18-month permit as soon as you have sat your final exam.

During these 18 months, you may take up any kind of employment to support yourself and fund your job search. If you are not successful in meeting the job search criteria after 18 months, then you will be asked to return to your home country. However, if you are successful you will apply for the longer term residence permit.



# Language skills – widening opportunities

There are many instances where a second or third language could increase your job opportunities and income.

At Lancaster University Leipzig, we want to help develop you into a student with a global reach. That's why we are providing conversational German classes to all of our students.

You will learn in English, and converse with classmates and academics in English, but we want you to be able to immerse yourself into the city of Leipzig – language is one way of doing this.

There are 95 million native German speakers, making it the second-most prevalent language in Europe after English. Around the world, there are also 10 – 15 million more speakers who have German as a second language.

Imagine in the future having the ability to state your native language, your English level, as well as conversational German level on your CV. This will make you extremely attractive to global employers.

Our academic team will work with you to ensure that you can succeed with both academic and language modules in your timetable.

Yes

Ja

No

Nein

Good day

Guten Tag

Hello

Hallo

**Some basic German  
to get you started:**

Thank you

Danke

Good morning

Guten Morgen

Thank you very much

Vielen Dank

Please

Bitte



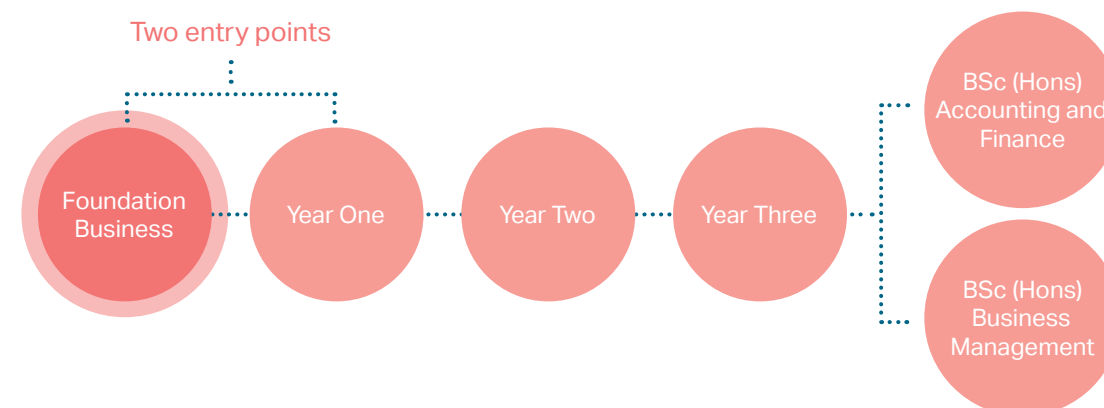
# Lancaster University degrees in Leipzig

## Degree facts

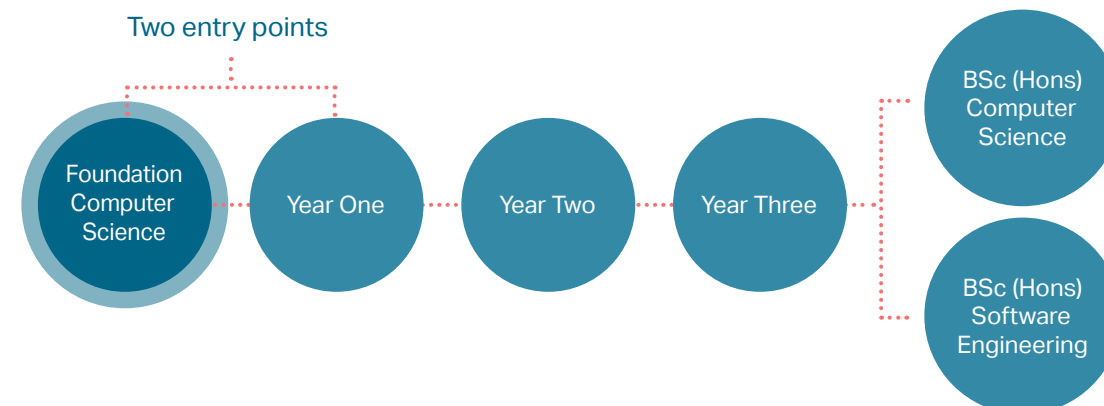
|                             |   |
|-----------------------------|---|
| <b>Degree:</b>              | Bachelor of Science (Hons)  |
| <b>Duration:</b>            | Three years (plus one if foundation needed)   |
| <b>Campus:</b>              | Leipzig   |
| <b>Language:</b>            | English   |
| <b>English requirement:</b> | <p>Year One Accounting/ Business: IELTS 6.5 (all bands 5.5)</p> <p>Year One Computing: IELTS 6.0 (all bands 5.5)</p> <p>Foundation: IELTS 5.5 (all bands 5.5)</p> |

There are two entry points onto our degree programmes; direct entry and Foundation year entry.

## Accounting and Finance/Business Management



## Computer Science/Software Engineering





8<sup>th</sup> in the UK for  
Accounting and  
Finance

The Times and Sunday Times  
Good University Guide 2020

## Why study business or accounting in Germany?

Germany is one of the most attractive business locations in the world. The excellent infrastructure and highly qualified workforce are factors that contribute to sustainable business success. Germany attracts major inward investment, with approximately 80,000 foreign companies across the country.

Source: Germany Trade and Investment

## BSc (Hons) Accounting and Finance

If you love numbers and want a sound technical knowledge of the business world, accounting and finance could be your ideal degree. You will study using real-world data from actual companies, and discover more about economic issues such as inflation, cost and pricing.

Accounting and finance offers some of the most stimulating and highly paid career opportunities in business, so it is no surprise that degrees in this area attract some of the most talented and ambitious students. Accredited by British accountancy bodies, this degree provides graduates with exemptions from many core professional examinations.

Modules may include:

- Introduction to Accounting and Finance
- Principles of Economics
- Accounting Information Systems and Auditing
- Principles of Finance

[Go online for full module guide](#)

### INTAKES

**January 2020**  
Foundation year only

**September 2020**  
Year One  
Foundation

### FEES (per year)

Year One  
Foundation

International Fee: €15,000

EU Fee: €9,000



## BSc (Hons) Business Management

Lancaster's multi-disciplinary business management degrees offer you the chance to explore different aspects of business and management. This degree will give you a broad and practical understanding of how businesses and managers operate.

You will be introduced to the concepts and theories of contemporary management and develop the skills and awareness needed to be an effective manager.

Modules may include:

- Data Analysis
- Business Analytics
- Marketing
- Accounting and Finance
- Strategic Management
- Leadership
- Human Resource Management
- Entrepreneurship

[Go online for full module guide](#)

### INTAKES

**January 2020**  
Foundation year only

**September 2020**  
Year One  
Foundation

### FEES (per year)

Year One  
Foundation

International Fee: €15,000

EU Fee: €9,000

## Why study computing in Germany?

Germany's ICT market is the largest in Europe, and for good reason. The country is both an innovative driver and extensive customer base for computing, communications and security solutions. 'Made in Germany' is a brand that stands for quality, innovation and expertise in global markets.

Source: Germany Trade and Investment

## BSc (Hons) Computer Science

Computer science is a dynamic discipline with a diverse range of applications and career paths. This programme explores the theory and practice of innovative and experimental computer science, allowing you to develop well-rounded professional and technical skills.

The computer science programme is accredited by the British Computing Society (BCS) and the Institute of Engineering and Technology (IET), and provides you with the knowledge and skills required to become a computing professional.

Modules may include:

- Digital Systems
- Software Development
- Fundamentals of Computer Science
- Information Systems
- Advanced Programming
- Computer Networks
- Software Design
- Human-Computer Interaction

[Go online for full module guide](#)

### INTAKES

**January 2020**  
Foundation year only

**September 2020**  
Year One  
Foundation

### FEES (per year)

Year One  
Foundation

International Fee: €15,000

EU Fee: €9,000





# BSc (Hons) Software Engineering

Software engineers are programming architects, who apply computer science, engineering and mathematical analysis to the design and development of large, complex, and critical software systems.

This programme provides you with a comprehensive grounding in computer science, while equipping you with the specialist skills required for a profession in software engineering and design.

Modules may include:

- Digital systems
- Software development
- Fundamentals of Computer Science
- Information systems
- Advanced programming
- Computer networks
- Software design
- Human-computer interaction

[Go online for full module guide](#)

## INTAKES

### January 2020

Foundation year only

### September 2020

Year One  
Foundation

## FEES (per year)

Year One  
Foundation

International Fee: €15,000

EU Fee: €9,000

*3<sup>rd</sup> in the UK  
for graduate  
prospectus*

**The Guardian University  
Guide 2020**





## Alternative Entry – the Foundation year

The Foundation year is specifically designed to support students who miss direct entry, due to their academic or English level. It offers an additional year of study, tailored to develop your academic knowledge and communication skills to the level required to commence the degree.

Starting at this level does increase your study duration, however this additional time in Leipzig allows you to grow academically, build confidence, get to know the city, establish a relationship with lecturers and ultimately be ready to take on the demands of degree level study. It's an additional entry point that allows access to the high quality Lancaster University degrees.

There are two intakes a year, leading into each of the four degree options. Modules are designed with Lancaster University and teaching is delivered by Navitas – an established, and highly trusted, education pathway provider. Classes are held in Lancaster University Leipzig.

### Foundation modules:

#### Business Management/Accounting and Finance

- Academic English and Skills
- Introduction to Principles of Accounting and Finance
- Introduction to Economics
- Introduction to Quantitative Methods for Business
- Introduction to Management
- Introduction to Marketing

### Foundation modules:

#### Computer Science/Software Engineering

- Academic English and Skills
- Introduction to Computing and Programming
- Application Development
- The Evolution of Computing and Communications
- Mathematics for Computer Science

### INTAKES

January 2020

September 2020

### FEES (per year)

International Fee: €15,000

EU Fee: €9,000





# Making Leipzig your new home

**Accommodation is one of the most important decisions you will make - it's vital that you feel happy and safe in your new home. It's not just about having a place to stay, it's about being in a safe, supportive and top quality environment, that feels like home away from home.**

In Leipzig, there is a combination of public and private accommodation options available. These are spread across the city and we can advise on the options available - there's a room to suit you.

For students new to Leipzig, we recommend the very cool, colourful and welcoming, BaseCamp Leipzig. BaseCamp Leipzig goes that extra mile for residents, with regular events and activities, 24 hour on-site support, well equipped gym and a bicycle during your stay.

Please note that BaseCamp is a private accommodation provider and your contract will be directly with them if you choose to proceed with a booking. However, we are here to help you along the way.

## INDICATIVE COSTS

**Studio Base, without kitchenette** (19 - 23 m<sup>2</sup>)  
€450 a month per studio, all inclusive

**Studio Base, with kitchenette** (18 - 23 m<sup>2</sup>)  
€495 a month per studio, all inclusive

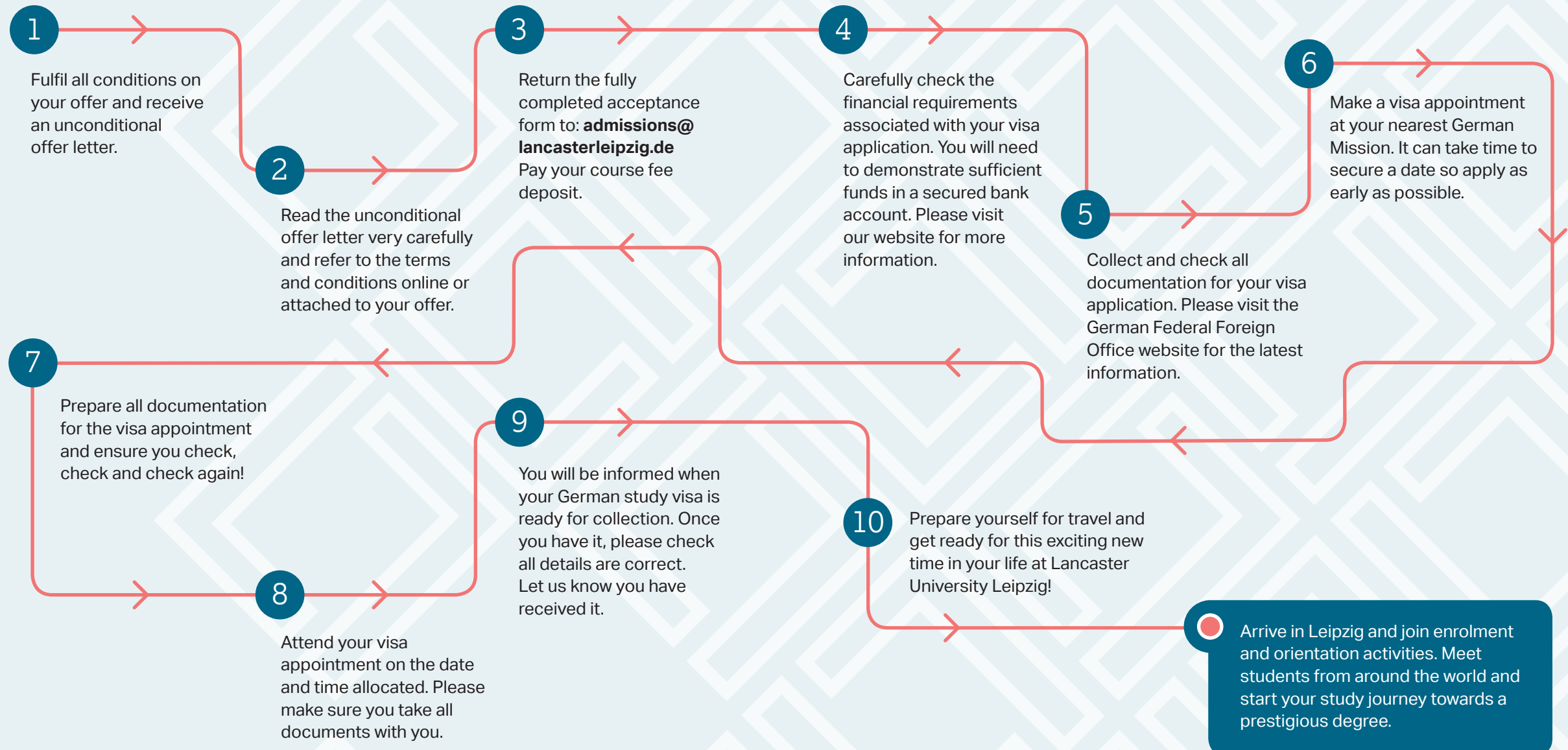
**Studio (Large), without kitchenette** (27 m<sup>2</sup>)  
€565 a month per studio, all inclusive



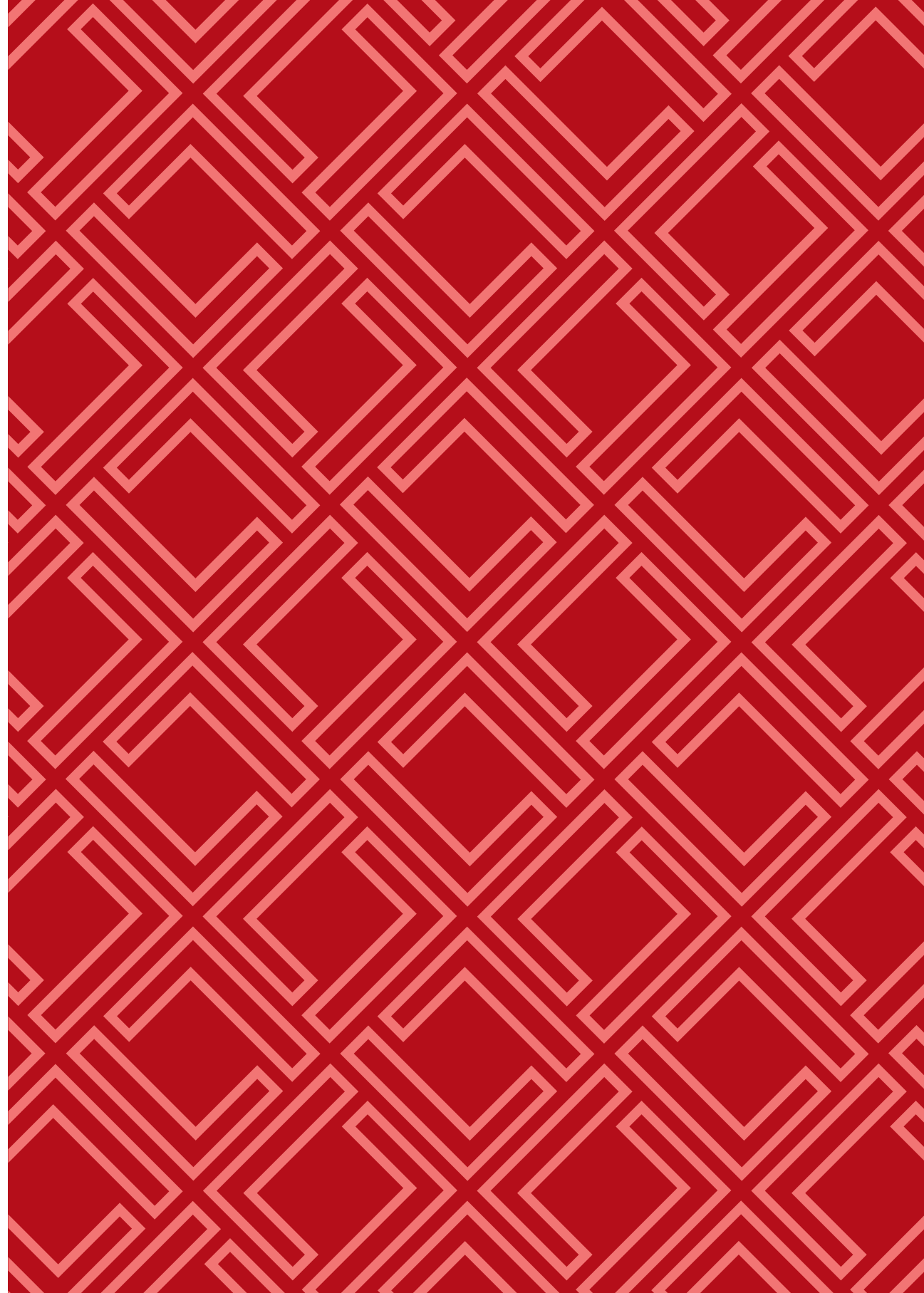


# The acceptance and visa process

**!** It can take up to three months to secure your German visa for study. Please prepare and apply as early as possible.



## Notes







To find out more and to submit an  
online application, please visit  
**[lancasterleipzig.de](http://lancasterleipzig.de)**

E: [info@lancasterleipzig.de](mailto:info@lancasterleipzig.de)

**Lancaster University Leipzig,**  
Die Post, Augustusplatz 1-4,  
04109 Leipzig, Germany